

Machine Edition Uninstall Procedure

(Applies to 6.50 and later installed on windows 7 hosts)

1. Perform a clean boot in Windows, refer to Microsoft article and follow instructions for windows 7:

<https://support.microsoft.com/en-us/kb/929135>

2. Backup all your projects and toolchest.

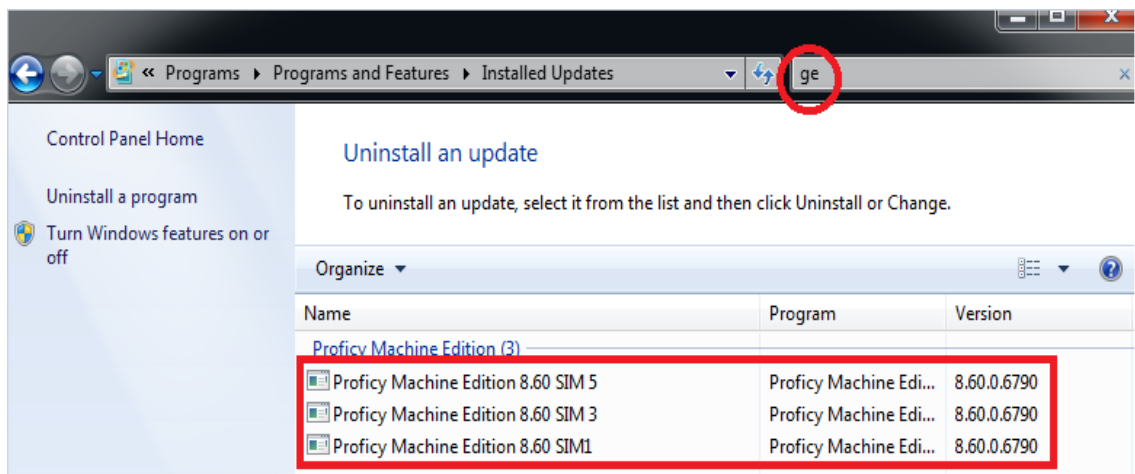
Default projects/toolchest locations listed below.

Backup the entire folders to a secure location such as local network share, USB storage device, windows desktop, etc. Copy and save these folders.

PME Version	Default project path	Default Toolchest path
8.60 to 9.00	C:\Users\Public\Documents\GE Intelligent Platforms\PME\SecurWORX\Local\FrameworkX	C:\Users\Public\Documents\GE Intelligent Platforms\PME\Toolchest
6.50 to 8.50	C:\Program Files (x86)\Proficy\Proficy Machine Edition\SecurWORX\local\FrameworkX	C:\Program Files (x86)\Proficy\Proficy Machine Edition\Toolchest

3. **See footnote 1.** Go to Control Panel\Programs\Programs and Features and then on left side select 'view installed updates'. Then type "GE" to filter to GE products.

You may then see 8.60 or 9.00 sims such as the example here:



If you already have 8.60 sim12 (or later) or 9.00 sim3 (or later) installed, skip to step 5.

¹ Applicable to only 8.60 and later users. If you are not uninstalling 8.6 or later, skip this step.

² Install 9.00 sim 3 only if you have never installed 8.60 on the machine and your removing 9.00 sim2 or sim1.

If you see Sims in the history, download and install 8.60 sim12 (or 9.0 sim3). These new Sims are designed to cleanly remove prior Sims.

DO NOT right click and manually uninstall each sim in the control panel.

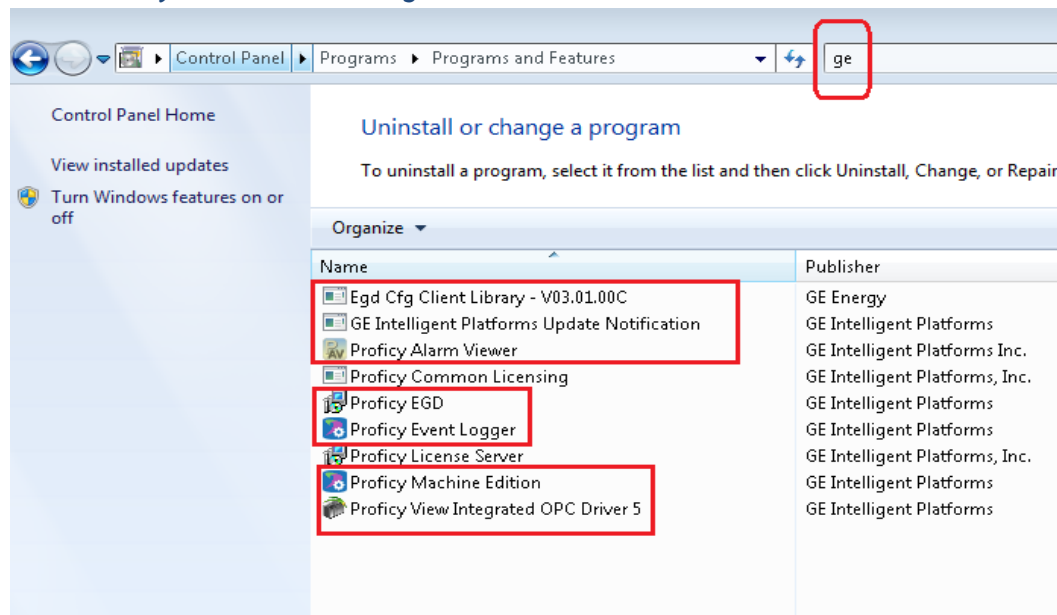
Go here to download 8.60 sim12 or 9.00 sim3:

[PME 8.60 sim12](#)

See footnote² [PME 9.00 sim3](#)

4. Reboot the machine.
5. Now uninstall Machine Edition. Go to Control Panel\Programs\Programs and Features. To show only GE products, type in GE in search box, then sort Publisher column with arrow up. **Right click and uninstall 'Proficy Machine Edition' first.** Then uninstall all other Machine Edition components as outlined in red.

Note: Proficy Common licensing/License server will NOT be removed.



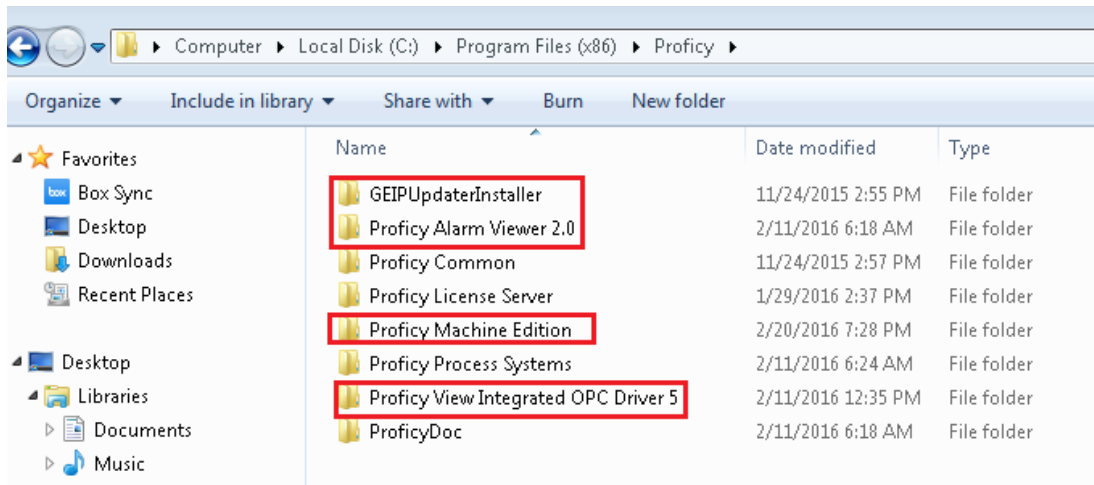
6. Reboot the machine.
7. Go to the \Proficy folder and delete the following folders in red on next page:

64 bit users: C:\Program Files (x86)\Proficy

32 bit users: C:\Program Files\Proficy

¹ Applicable to only 8.60 and later users. If you are not uninstalling 8.6 or later, skip this step.

² Install 9.00 sim 3 only if you have never installed 8.60 on the machine and your removing 9.00 sim2 or sim1.



8. **See footnote ¹**. Delete the \GE Intelligent Platforms folder under the following path.

C:\Users\Public\Documents

9. Reboot the machine.

10. Windows registry cleanup.

Open registry editor from Windows start > search > type in 'regedit' and choose regedit.exe <enter>.



- a. Locate the following keys and right click on Taylor key and choose delete.

(64 bit users)

HKEY_CURRENT_USER\Software\Taylor

HKEY_LOCAL_MACHINE\SOFTWARE\Wow6432Node\Taylor

(32 bit users)

HKEY_CURRENT_USER\Software\Taylor

HKEY_LOCAL_MACHINE\SOFTWARE\Taylor

- b. **See footnote ¹**

Right click delete all Keys that contain **"Proficy Machine Edition # SIM #"** and the **"Proficy View Integrated OPC Driver"** key.

¹ Applicable to only 8.60 and later users. If you are not uninstalling 8.6 or later, skip this step.

² Install 9.00 sim 3 only if you have never installed 8.60 on the machine and your removing 9.00 sim2 or sim1.

(64 bit users)

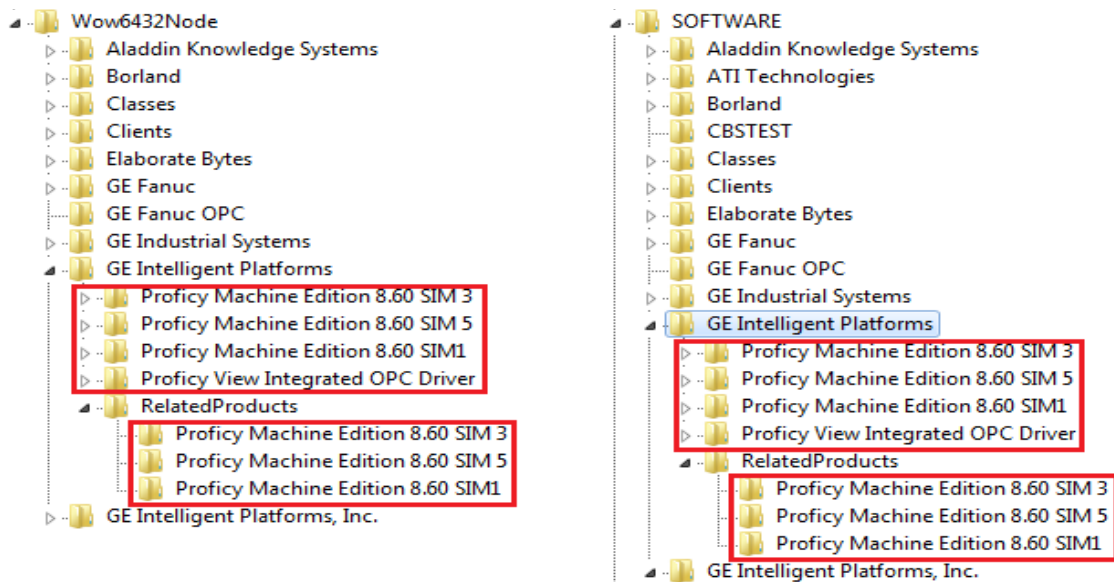
HKEY_LOCAL_MACHINE\SOFTWARE\Wow6432Node\GE Intelligent Platforms

(32 bit users)

HKEY_LOCAL_MACHINE\SOFTWARE\GE Intelligent Platforms

Example screenshot below (64 bit user on left and 32 bit on the right).

Delete all keys shown inside the red border:



11. Exit and close the windows registry.
12. Empty windows recycle bin and then **reboot the machine again**.
13. Reinstall Machine Edition and latest available SIM for the major release you are installing.
14. Go back into msconfig.exe and reset PC to start normally after clean boot troubleshooting.

You must perform this step otherwise the PC will always boot up with limited services clean boot mode and 3rd party applications will not run correctly.

- a. Click **Start**, type msconfig.exe in the **Start Search** box, and then press Enter.
Note If you are prompted for an administrator password or for confirmation, you should type the password or click **Continue**.
 - b. On the **General** tab, click the **Normal Startup** option, and then click **OK**.
 - c. When you are prompted to restart the computer, click **Restart**.
15. Go back to step 2 and restore your projects and toolchest. Copy the folders that you saved to a secure location and paste them back into the same original paths.
 16. Procedure is now complete and you can start using Machine Edition.

¹ Applicable to only 8.60 and later users. If you are not uninstalling 8.6 or later, skip this step.

² Install 9.00 sim 3 only if you have never installed 8.60 on the machine and your removing 9.00 sim2 or sim1.