

QuickPanel+ OS Image Update Utility

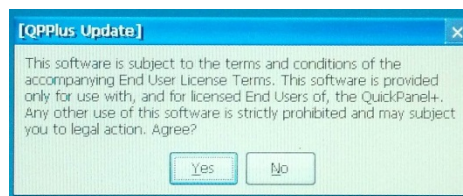
OS Image Update Process

In order to update the QuickPanel+ OS image, please follow the steps below.

1. On an external PC, copy the files below to an SD card
 - a. NK.nbo
 - b. Eboot.nbo
 - c. QPPlusUpdate.exe

NOTE: QPPlusUpdate.exe (10/15/2014) or later does not require the Config1.nbo file

2. Remove power and all cables to the QuickPanel+
3. Set the flash write enable switch, DP1 to “on” position. Please see the Appendix for instructions regarding back cover removal and switch locations per panel size.
4. It is recommended to re-attach the back cover to protect the internal electronics of the QuickPanel+ during handling
5. Insert the SD card into the QuickPanel+ external SD slot
6. Attach power to the QuickPanel+
7. Once the QuickPanel+ boots, go to SDMemory and launch QPPlusUpdate.exe
8. Acknowledge the EULT



9. Please note that “pop-up” windows may be hidden behind the current window, therefore, “pop-up” windows will need to be brought to the front via the taskbar.
10. Confirm that you want to update the image.
11. Flash programming will start and a small window will notify of “Writing NK to NAND Flash xx%”
12. Upon completion, a new window will confirm “Firmware Updated Successfully!” and will ask to power cycle or reboot the unit.
13. Upon successful programming, the image can be verified by checking the Build version under the System Information Utility.
14. Remove power, remove the back cover if re-attached and roll back DP1 switch to “off” position
15. Re-attach the back cover with screws
16. Re-attach the battery if applicable
17. The QuickPanel+ OS is now updated

Appendix A 7" QuickPanel+ Switch Setting

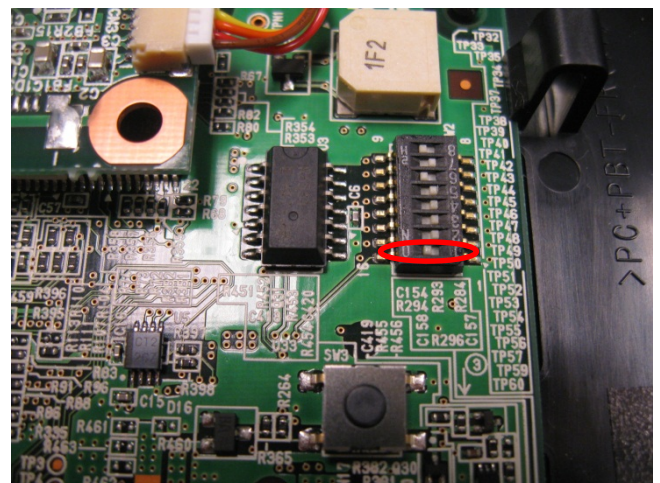
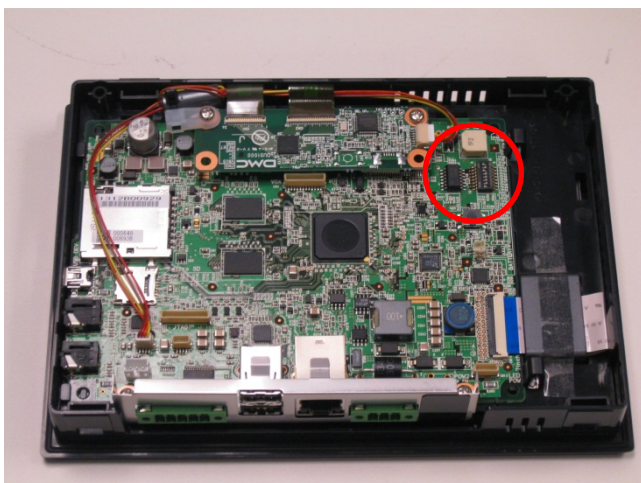
1. Remove the screws on the back side of the unit



2. Remove the battery cover from the back of the unit and remove the battery



3. Carefully remove the back cover by lifting on the end where the screws were removed. At the same time, gently pushing downwards to clear the I/O connectors.
4. After the cover is removed, locate and Enable DP1 Switch by sliding to "on" position



Appendix B 10", 12", and 15" QuickPanel+ Switch Setting

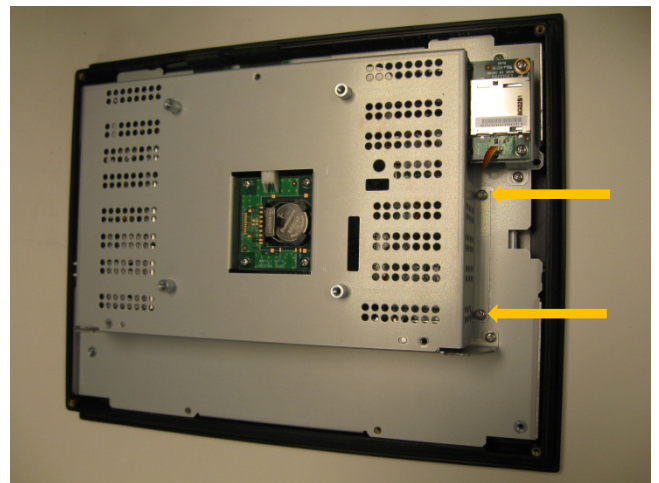
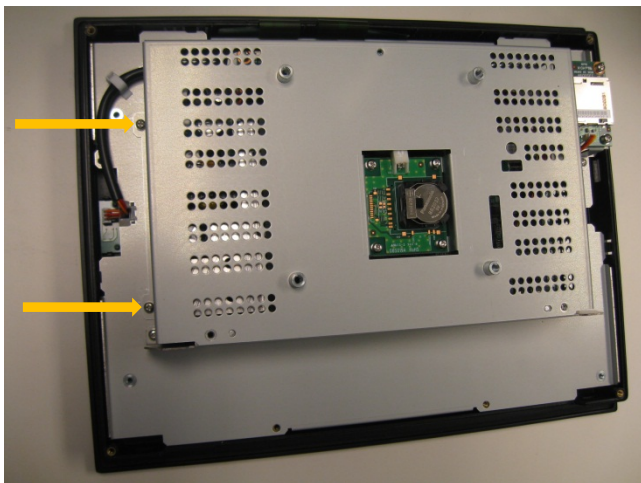
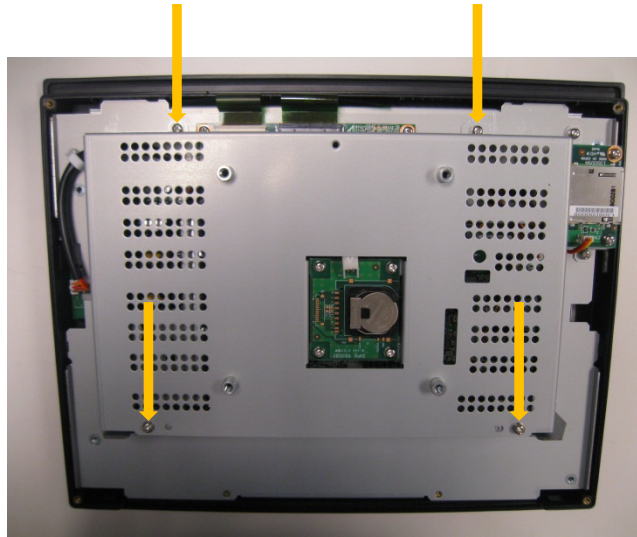
1. Open the QuickPanel+ by first removing the screws on the back side of the unit



2. Carefully remove the plastic back cover. (On 10", 12", and 15" QuickPanel+, plastic side tabs may need to be gently depressed to release the catch mechanism).



3. Next, remove the screws on the metal housing of the unit.



4. Carefully lift open the metal cover.



5. After the cover is removed, locate and Enable DP1 Switch by sliding to “on” position

