

JetView Pro Getting Started Guide

Introduction

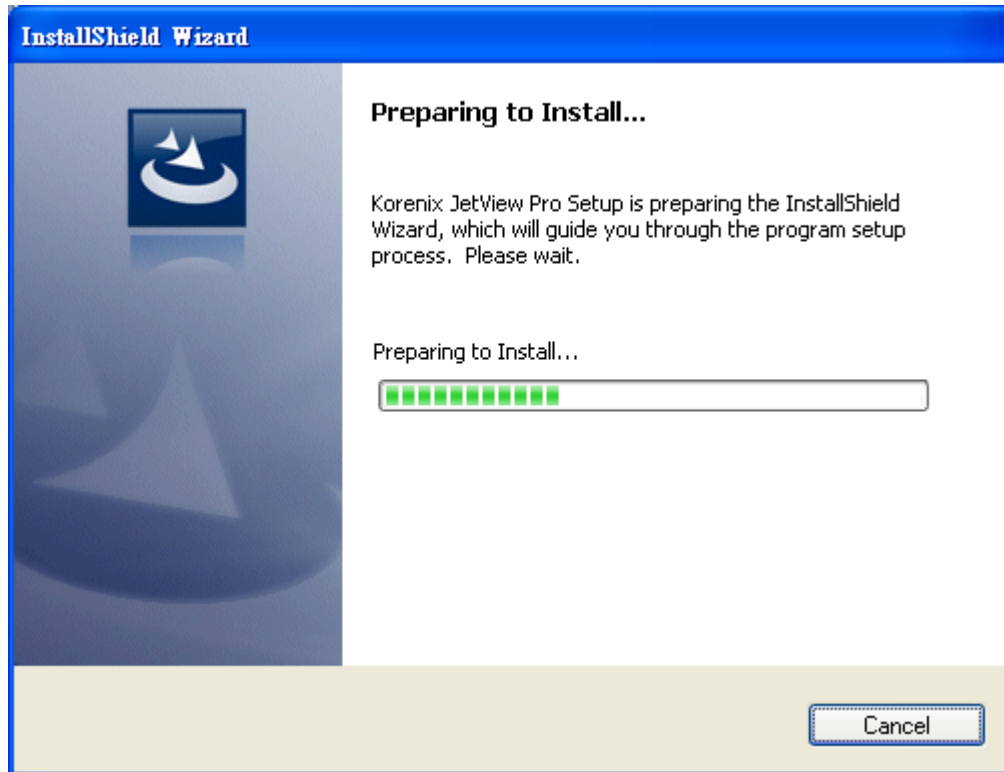
JetView Pro is Industrial Innovation Network Management system (i²-NMS). So JetView Pro is also called i²-NMS for short. It is specifically designed for the mission critical industrial environments. The JetView Pro provides a comprehensive platform for monitoring, configuring, and maintaining mission-critical IP-based communication networks, such as IP surveillance, factory automations, mining, substations, maritime, and military applications.

System Requirements

- Hardware
 - Processor
Minimum Intel Core 2 Duo CPU 2.5 GHz or higher
 - RAM
1GB RAM
 - Disk
1GB hard disk
- Software
 - Operation system
Windows XP/2000/2003 platforms
- Screen Resolution
It is optimized for a screen resolution of 1024x768.

Installation

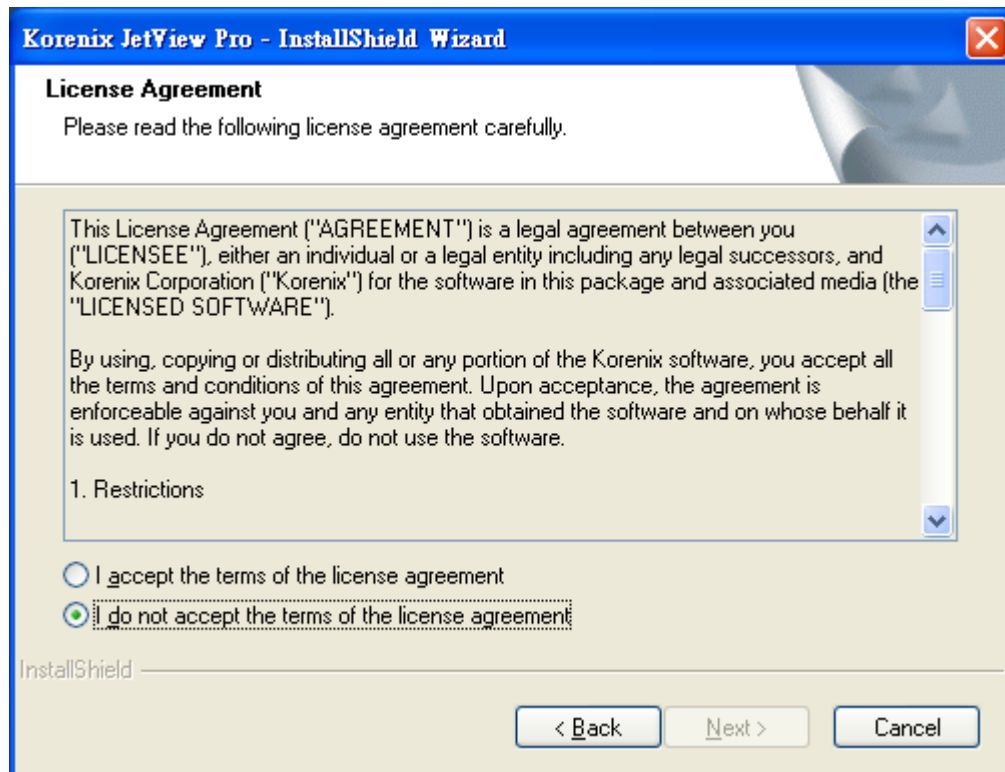
1. Run setup.exe.



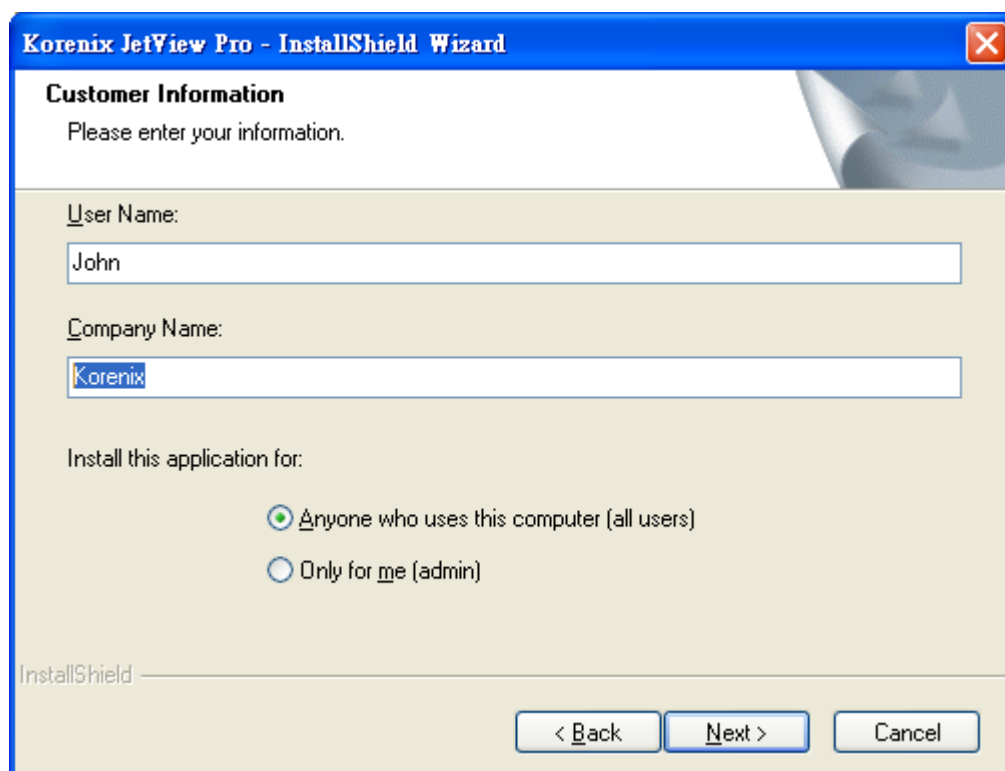
2. Press **Next** to next screen.



3. Please read the license agreement and select "I accept the terms of the license agreement. Press **Next** to next screen.

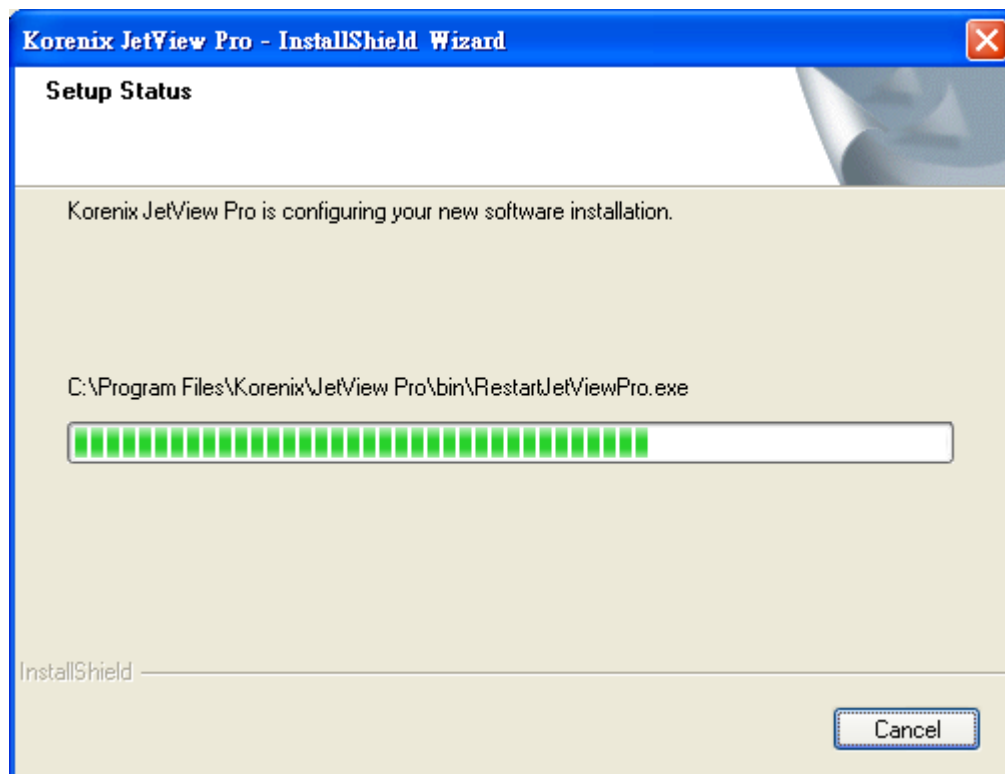
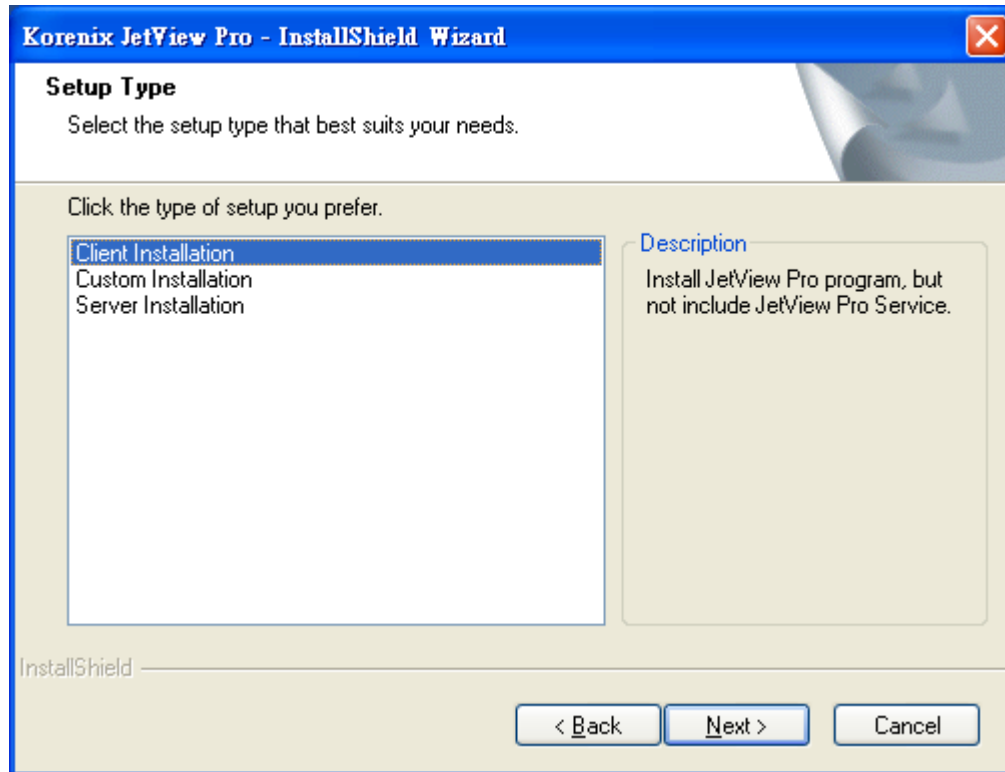


4. Input User Name and Company Name and Press **Next** to next screen.

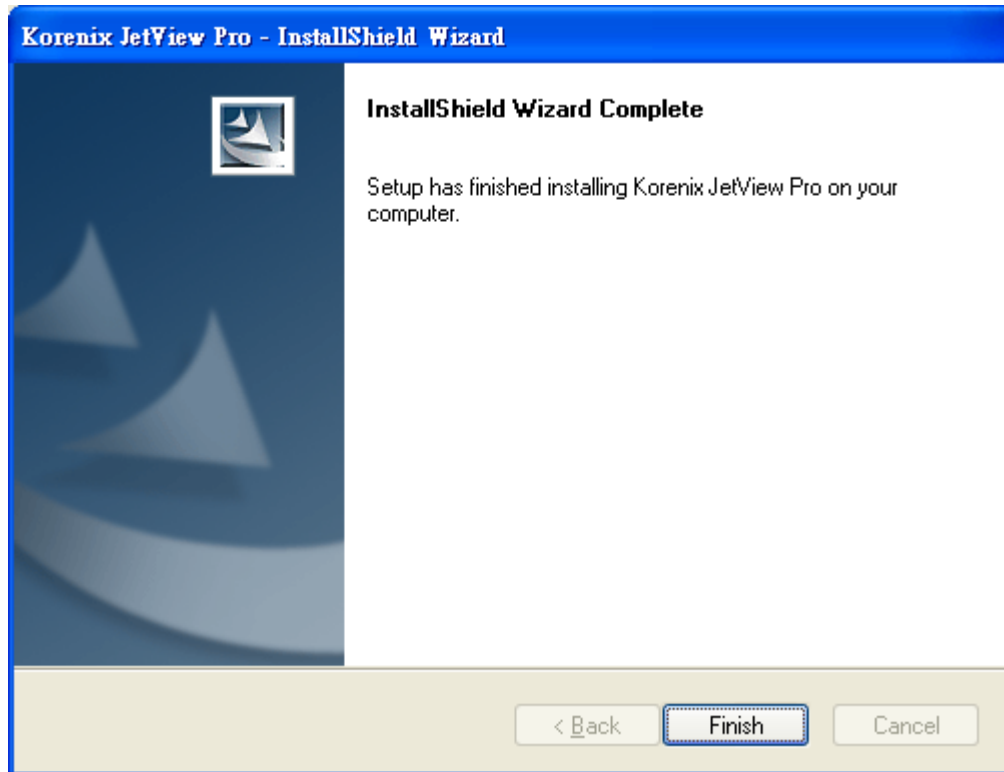


5. Select the type of setup and press **Next** to next screen.

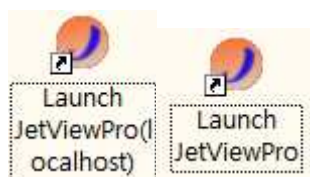
Note: choose client installation for client only, server installation for all or custom installation.



6. Press Finish to end installation.



On the desktop or in **Start / Programs / Korenix / Korenix JetView Pro /**, there are two program shortcuts (as figure).



The “Launch JetView Pro(localhost)” is for local connection, while the “Launch JetViewPro” is used to connect to remote server.

Getting Started

JetView Pro is a client/server based network system. One JetView Pro server can serve many remote JetView Pro clients (maximum is 5) ¹.

Because of the access synchronization, we only allow one client entered the **Edit** mode at the same time and the other clients on **Monitor** mode. The default

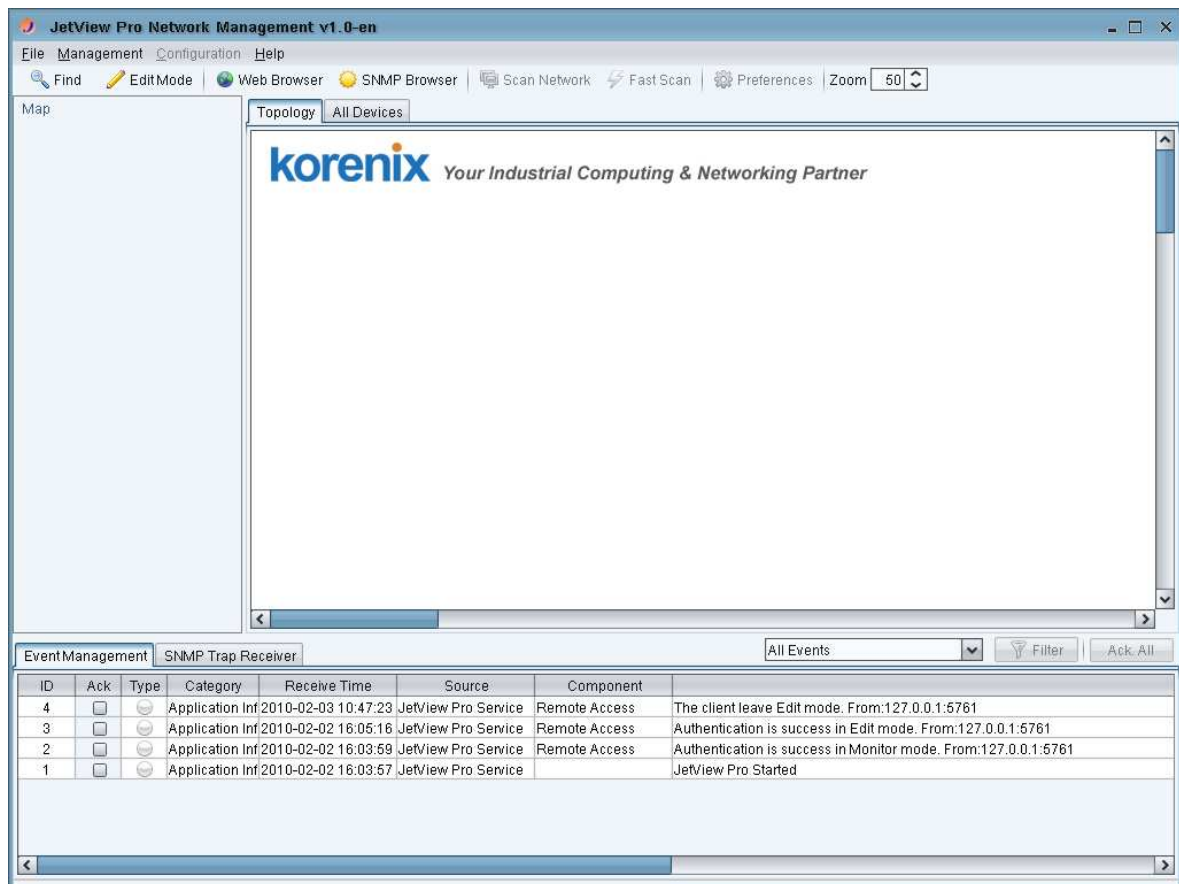
¹ Only one remote client connection per computer. The server will refuse the new connection if there is already one session exist.

password to enter the two modes is “korenix”. The Monitor mode can only allow viewer to browse the topology. The Edit mode can use all functions.

■ Start JetView Pro server on Server site

1. **Start / Programs / Korenix / Korenix JetView Pro / Launch JetViewPro(localhost)**

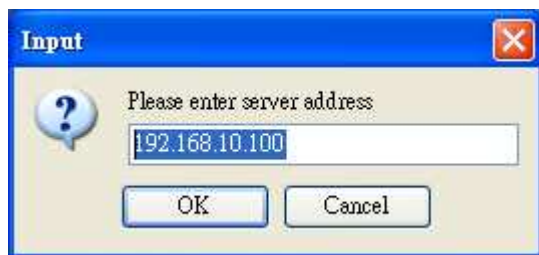
2. Display JetView Pro Main Window.



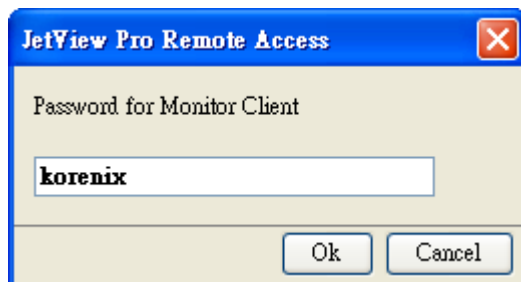
■ (Optional) Start JetView Pro client on Client site

1. **Start / Programs / Korenix / Korenix JetView Pro / Launch JetViewPro**

2. Enter server address to connect. (ex. Server IP: 192.168.10.100)

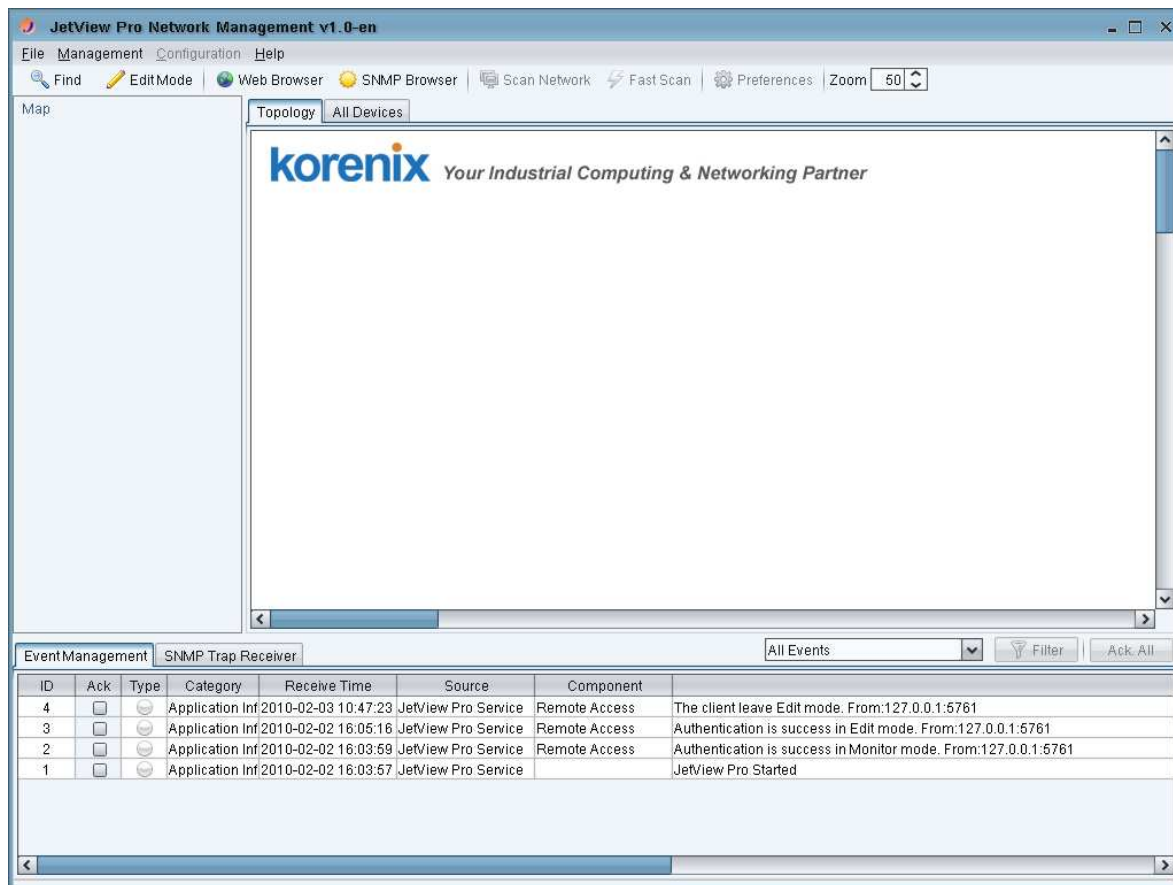


3. Enter password into monitor mode and press "Ok".



Note: the default password for Monitor Mode access is "korenix".

4. Display JetView Pro Main Window.




■ Register for 64 nodes

1. Check whether the version of JetView.Pro is 1.0. If no, download JetView Pro v1.0 (only support for 16 nodes) and install.
(<http://www.korenix.com/support-jetview-software.htm>)
2. Fill out JetView Pro registration form and we will send authentication code (support for 64 nodes) to your filled E-mail address.
(<http://www.korenix.com/support-jetviewpro-registration.htm>)

JetView Pro Registration Form

Your e-mail address must be entered properly and must be valid as the authentication code of JetView Pro! It will be sent to this address. Please, re-check the entered e-mail address before submitting the form.

* Company	<input type="text"/>
* First Name	<input type="text"/>
* Last Name	<input type="text"/>
* Email Address	<input type="text"/>
* Re-type Email	<input type="text"/>
City	<input type="text"/>
State/Province	<input type="text"/>
Country	<input type="text"/>
Note	<input type="text"/>
* Type the characters you see in the picture right.	
	<input type="text"/>

(* All starred fields are required)

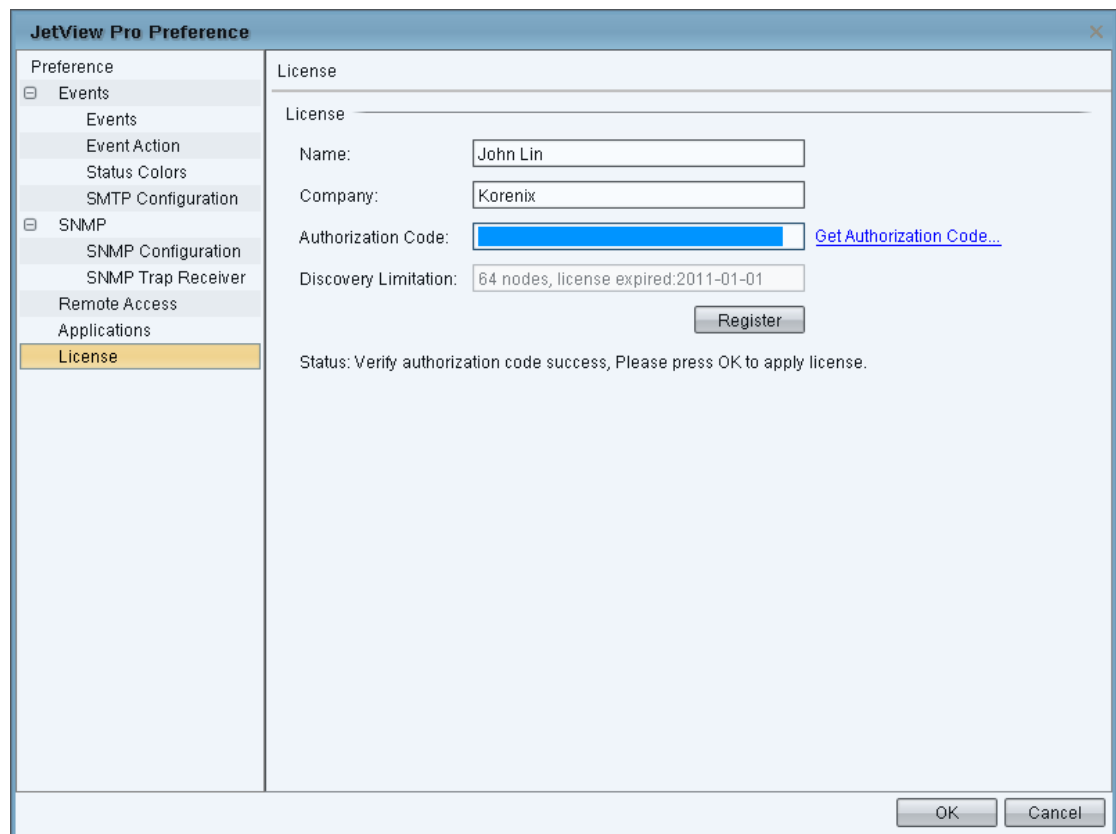
3. After receiving the E-mail letter, go to JetView Pro>Preference>License.

The screenshot shows the 'JetView Pro Preference' dialog box with the 'License' tab selected. The left sidebar contains a tree view with the following items: Preference, Events, Event Action, Status Colors, SMTP Configuration, SNMP, SNMP Configuration, SNMP Trap Receiver, Remote Access, Applications, and License (which is highlighted). The main area of the dialog is titled 'License' and contains the following fields and controls:

- Name:** A text input field.
- Company:** A text input field.
- Authorization Code:** A text input field with a blue link [Get Authorization Code...](#) to its right.
- Discovery Limitation:** A text input field containing the value '16 nodes'.
- Register:** A button located below the Discovery Limitation field.

At the bottom right of the dialog box are 'OK' and 'Cancel' buttons.

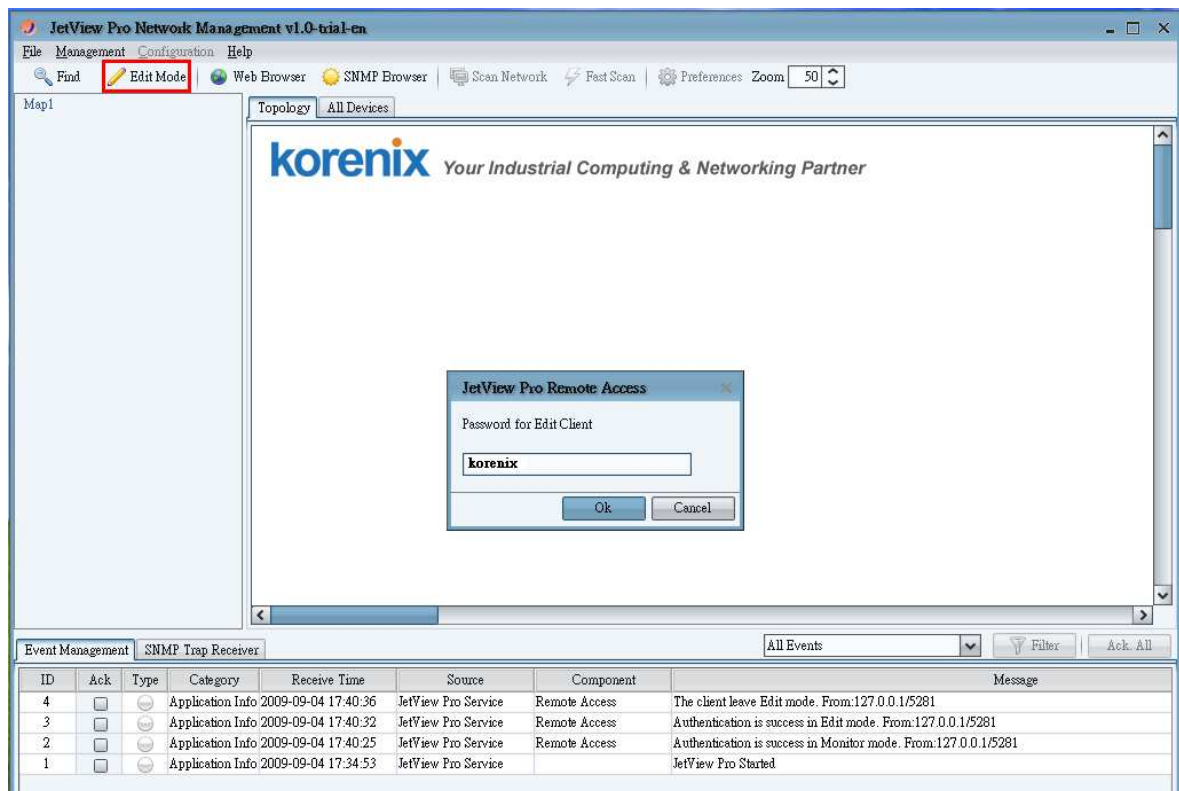
4. Fill out Name, Company and Authorization Code base on the content of E-mail letter. And then press Register button.



5. Finally, press OK to apply license.

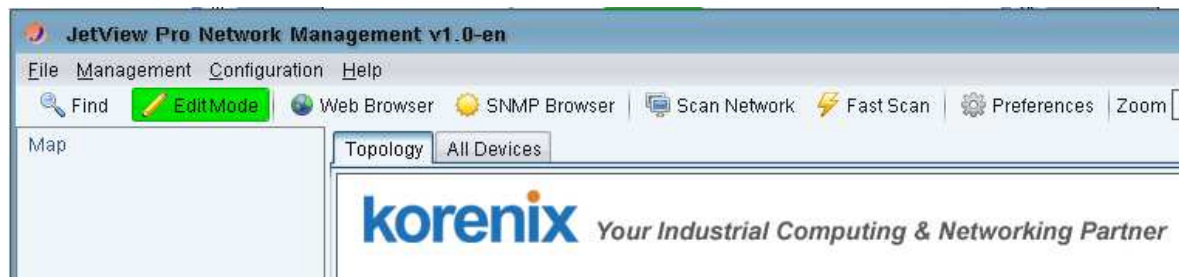
■ Enter Edit mode

1. Click on Edit Mode on the toolbar, it displays Password dialog..



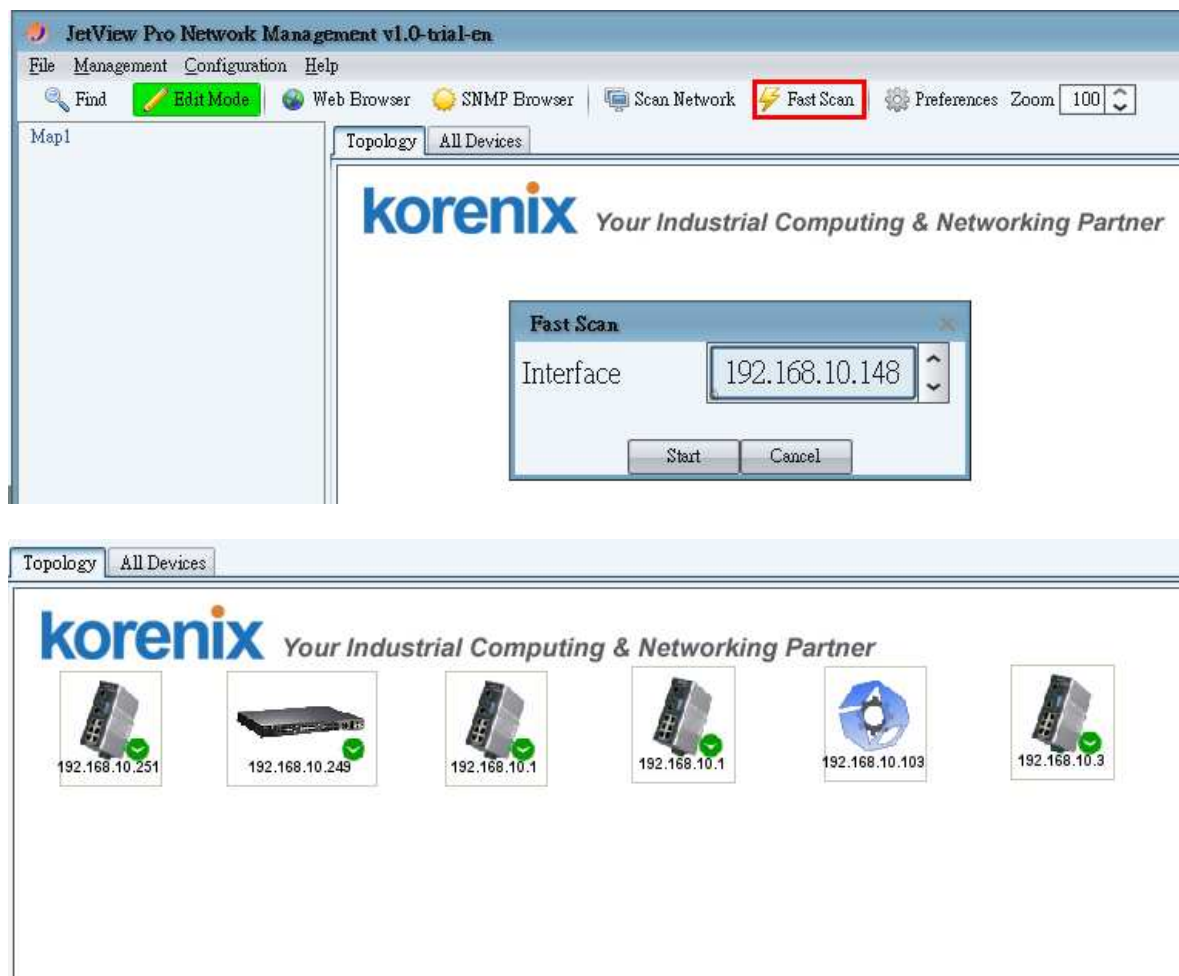
2. Input password and press OK.

3. After entering Edit Mode, the button will become green.



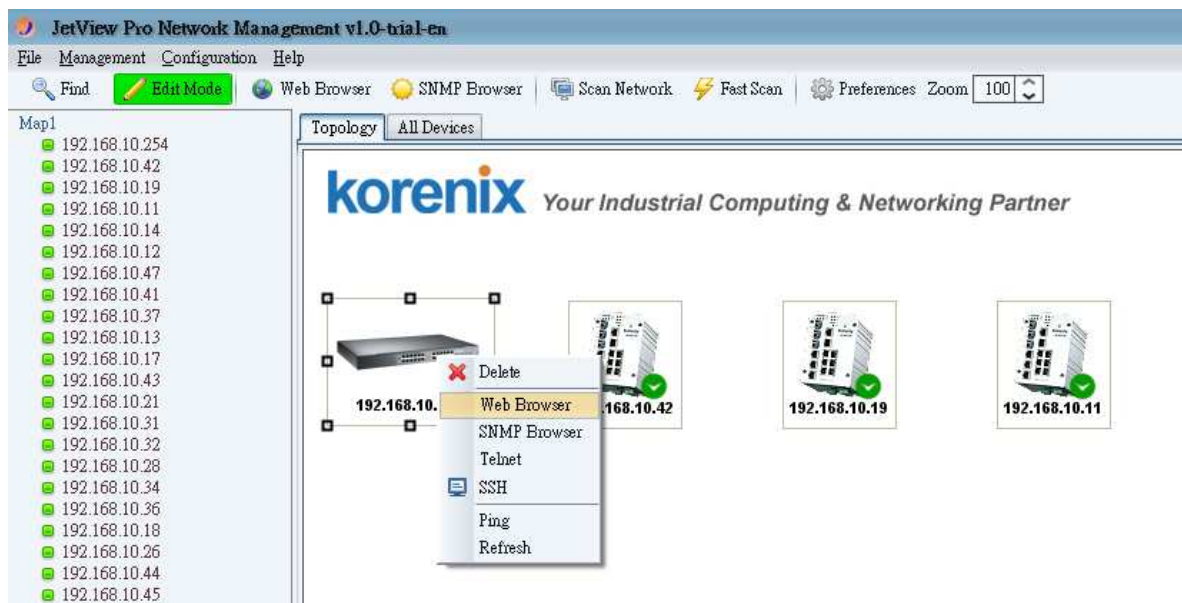
■ Fast scan (add devices)

To update installed network components (or devices), click on Fast Scan on the toolbar and select one of your NIC which connect to devices. It displays all Korenix devices in the network on the **Topology** tab.



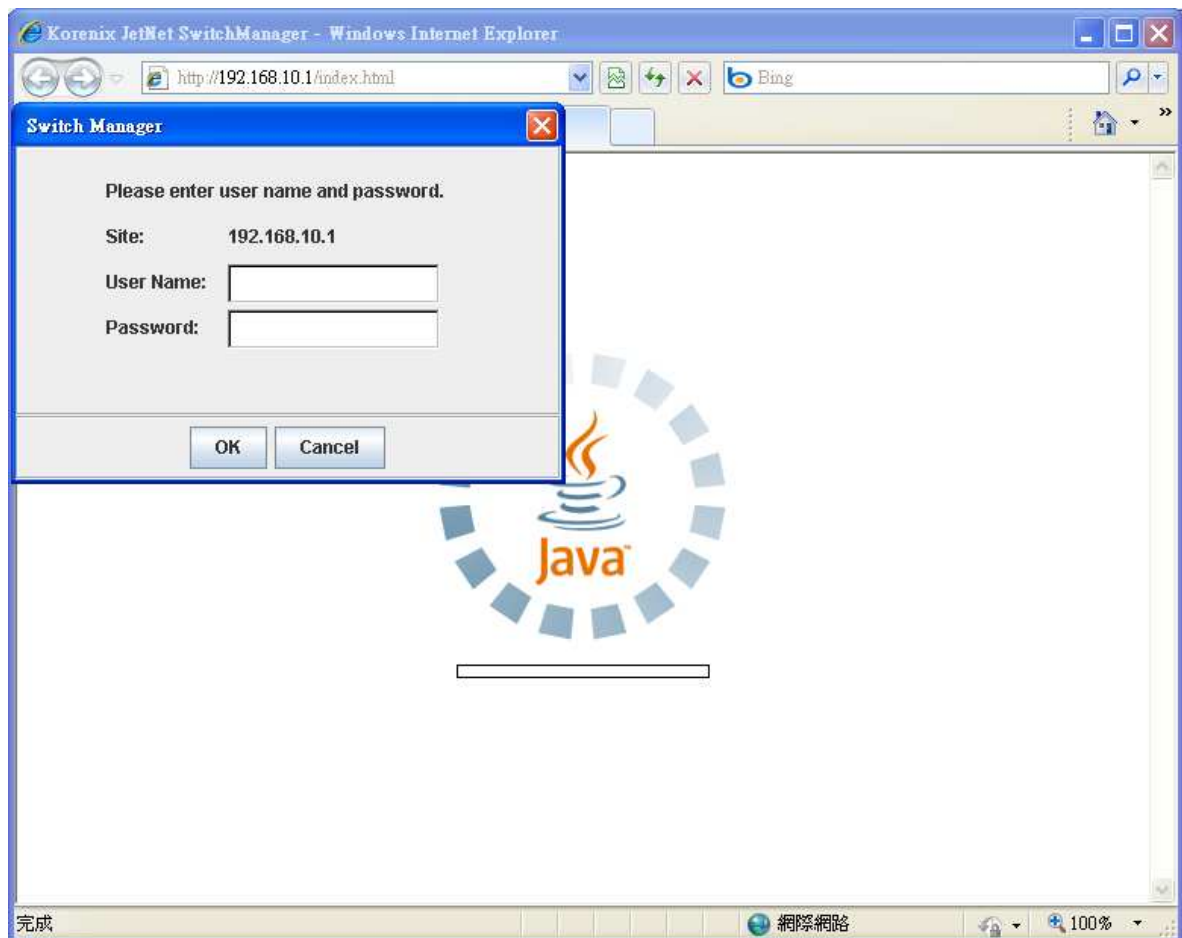
■ Auto Topology

1. To let “Auto Topology” working, each network device (i.e. JetNet5010G) MUST enable LLDP function. Enter Web screen to confirm whether LLDP is enabled.
 - a. Use mouse to select one device on the Topology tab which you want to enable LLDP.
 - b. Mouse right-click the selected device and click on the **Web Browser** menu-item of pop-up menu.



- c. When the login screen appears, login with the user name and password.

Note: The default login User Name and Password: admin/admin



- d. Click on the tree node **Topology Discovery**.

LLDP Disable ▼

LLDP Configuration

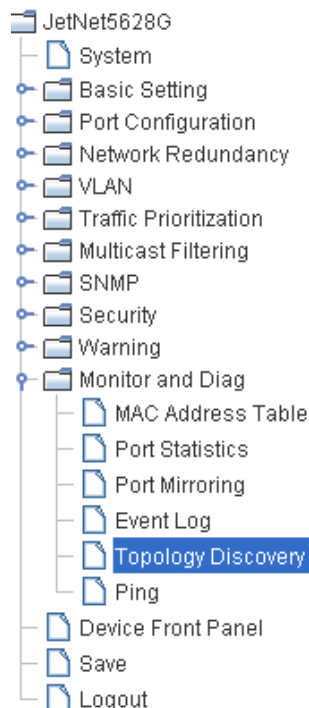
LLDP timer	<input type="text"/>
LLDP hold time	<input type="text"/>

LLDP Port State

Local Port	Neighbor ID	Neighbor IP	Neighbor VID

Apply

- e. Confirm whether LLDP is enabled. If Disable, please set Enable and press **Apply**. You manual set the timers of LLDP.
The range of LLDP timer is 5~254 and LLDP hold time is 10~255.



Topology Discovery


LLDP

LLDP Configuration

LLDP timer	30
LLDP hold time	120

LLDP Port State

Local Port	Neighbor ID	Neighbor IP	Neighbor VID
fa9	00:12:77:ff:02:c3	192.168.10.10	1
fa13	00:12:77:60:14:60	192.168.10.20	1

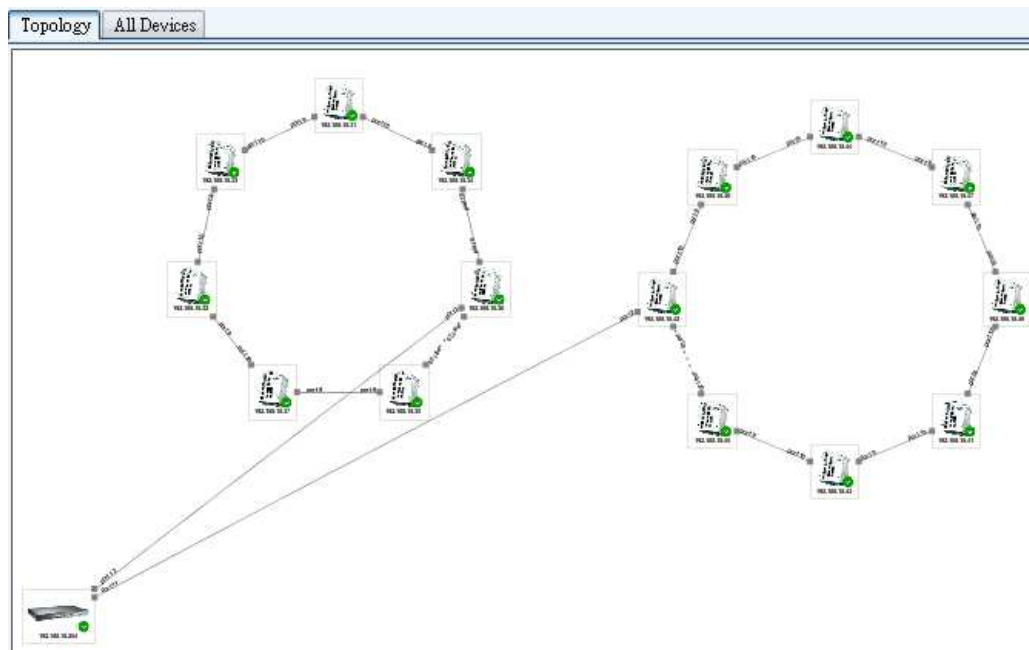
2. Check every devices' icon that each one has a green check  on it. Device icon without check icon can't access by SNMP².
3. Generate connections between the devices³.
4. Mouse right-click on the Topology tab and click on **Auto Topology** on pop-up menu. It will display as follows:

² You may need to wait 0.5 minute to let JetView Pro collect devices' information.

³ In the example below, JetView Pro add connections and place all devices according to the SNMP mib.



- a. Press OK to display the following of screen:



Auto Topology Check List:

Yes/No	Requirement
	Does every device enable SNMP?
	Does any device not using default SNMP community? (public, private)
	Does every devices' icon show green?
	Does every device enable LLDP?
	If the device show red (not reachable), after you fix the problem, did you refresh the device?